

# UVL<sup>Rx</sup>

## THERAPEUTICS

### Intravenous Light Therapy



CE Marked Model UVL1500 UVLrx Station™

## Introducing the UVLrx Treatment System™

Multiple wavelengths delivered concurrently.  
Integration into a standard IV catheter.  
Maximum health benefits.

**Safe • Simple • Effective**

# Introducing the UVLrx Treatment System™

## CE-Marked Indications For Use

- Reduction of pain
- Reduction of pathogens in the blood
- Reduction of Inflammation
- Immune system modulation
- Improved ATP Synthesis
- Improved wound healing
- Improved blood oxygen transport
- Improved circulation

CE  
0086

CE Marked Model UVL 1500 UVLrx Station™

## UVLrx Station™

The model UVL1500 combines clinically validated therapeutic wavelengths into a single, optical emission. Lightweight design allows placement on a countertop or mounted to an I.V. pole. The touchscreen display and easy user interface allow for quick treatment initiation.

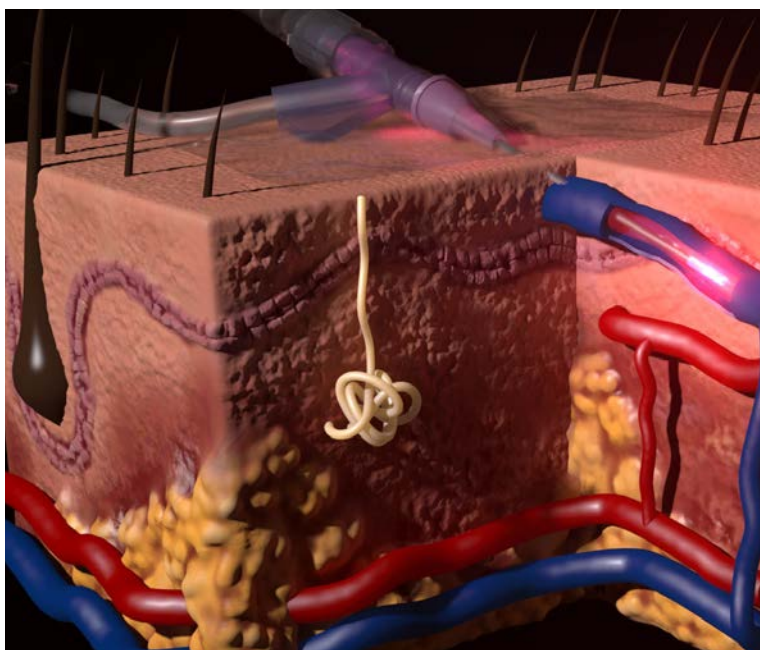
## UVLrx Patient Cable

The UVL1510 Patient Cable is a highly flexible, durable fiber optic cable that transports the light generated by the model UVL1500 UVLrx Station to the UVL1520 Dry Light Adapter™. Its durable design allows multiple uses.

## UVLrx Dry Light Adapter™

The UVL1520 Dry Light adapter (DLA™) is a precision forged, stainless steel sheathed, fiber optic disposable, provided sterile. It is inserted into and resides within an existing 20-gauge 1.0" peripheral intravascular catheter administering multiple wavelengths of therapeutic light to the passing blood supply.

# Safe • Simple • Effective



## Intravenous Light Therapy

UVLrx Treatment System's direct-to-blood delivery method treats blood intravenously, without the need for removal or the use of blood thinners or additives.

Three key benefits:

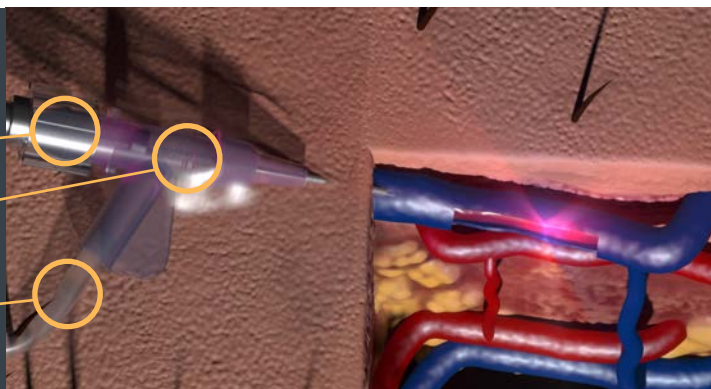
1. Integration into an existing, standard I.V. catheter simplifies the procedure. There is no need for additional catheter sites and no sharps remain in body
2. Blood remains in its natural environment inhibiting a foreign body response
3. Most importantly, nearly 100% of a patient's total blood volume is treated in a single treatment

## Therapeutic Integration

Patient Cable Connected to DLA

DLA Body Integrated in Catheter

DLA Saline Port Connected to I.V.

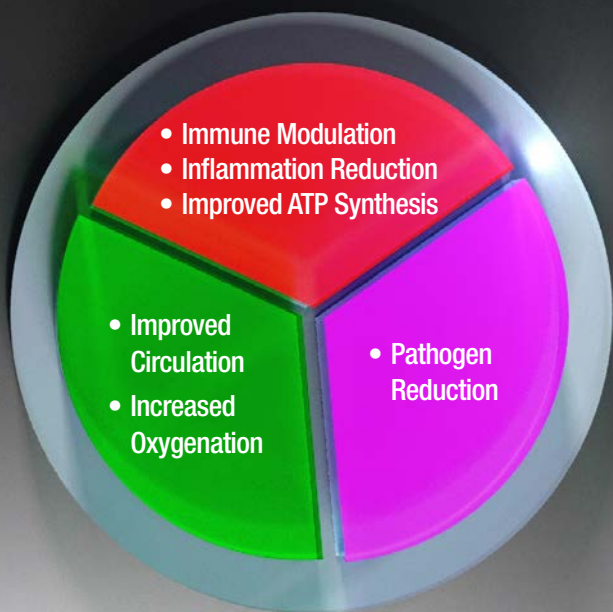


## Compounded Therapeutic Delivery

Each unique wavelength administered, triggers or modulates distinct biological mechanisms within the body. The selectively combined wavelengths of the model UVL1500, trigger complimentary biological pathways to yield a more pronounced clinical outcome.

During the first 30 minutes of the 60-minute cycle, UVA and Red are administered concurrently, promoting greater immune system modulation and pathogen eradication. During the remaining 30 minutes, Red and Green are administered concurrently, promoting greater oxygen delivery, Adenosine Tri-phosphate (ATP) production, wound healing and reduction in pain.

In this case, the whole of the treatment truly becomes greater than the sum of its parts.





## Patient Treatment & Experience

Once an I.V. site is established, the system calibration and setup takes a matter of minutes. A patient sits comfortably during the 60-minute treatment.

The single-setup treatment runs for 60 minutes:

- 30 minutes of Red and UVA
- 30 minutes of Red and Green

The design of the UVLrx DLA™ allows a provider to simultaneously administer I.V. fluids. For hospitals, outpatient surgery centers, and private practice physicians, the UVLrx Treatment System seamlessly integrates with the standards of care for a variety of indications and conditions.



**Intelix Medical Solutions**  
 5550 LBJ Freeway Suite 684  
 Dallas, TX 75240

**Intelixmedical.com**  
 salesinfo@intelixmedical.com  
 (972.523.1926)

### UVL1500 System Specifications

AC Input Supply: 100V – 240V, 50/60 Hz  
 Max Input Power: 48W  
 Dimensions (inches): 12 x 9.5 x 8.5  
 Weight (lbs.): 10 max.  
 Mounting: IV Pole or Table Top  
 User Interface: Touchscreen Control  
 Regulatory Clearances: CE 630912  
 Patents Pending: US and International

### Optical Output

UV Wavelength: 1000 uW/cm2  
 Pathogen Deactivation  
 Immune System Modulation

Red Wavelength: 270 uW/cm2  
 Reduction of Pain & Inflammation  
 Improved ATP Synthesis  
 Improved Wound Healing

Green Wavelength: 225 uW/cm2  
 Improved Blood Oxygen Transport  
 Improved Circulation

**CE** **EC** **REP**  
 MDSS GmbH  
 Schiffgraben 41  
 D-30175 Hannover, Germany



**ISO13485**  
**certified**

Made in the USA